

Double Insulated Position Switch IN65

- Position Switch in accordance with EN 50047
- Modular design
- Easy modular adjustment of actuator head through 45° increments

Advantages

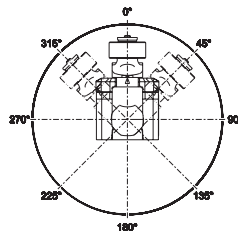
- High reliability at low currents (1 mA)
- Tool-free rotation and changing of actuator
- Actuator made of metal
- Protection class IP66 and IP67
- Hinged snap-on cover
- Self cleaning contacts

Technical Data

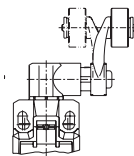
- Mechanical service life: up to 30 million switching cycles
- Contact safety: 1 mA for 24 V DC



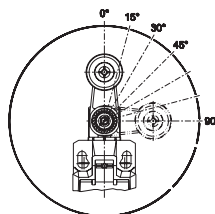
Adjustable actuator elements



Rotatable lever



Adjustable lever



Rotate actuator

